

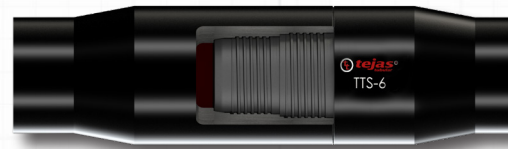
TTS-6 BENEFITS

- ✓ Gas-tight
- ✓ 100% efficiency under tension/compression & internal/external pressure
- ✓ Deep stabbing
- ✓ Eliminates galling risk
- ✓ High torque strength
- ✓ Reduced erosion corrosion



PROFESSIONAL AFFILIATIONS

-  International Association of Drilling Contractors (IADC)
-  American Petroleum Institute (API)
-  National Minority Supplier Development Council (NMSDC)



Tejas Tubular Products, Inc.

Corporate Office
8799 North Loop East, Suite 300
Houston, Texas 77029 USA

Tubing & Accessories Plant
8640 North Green River Drive
Houston, Texas 77028 USA

Casing Plant
8740 Miller Road #2
Houston, Texas 77049 USA

Tubing Plant and ERW Mill
600 Caporal Drive
Stephenville, Texas 76401 USA

New Carlisle Works (Casing)
31140 Edison Rd
New Carlisle, Indiana 46552 USA

Phone: 713-631-0071

Toll-Free: 800-469-7549

Fax: 281-822-3401

Email: sales@tejastubular.com

Web: www.tejastubular.com



tejas[®]
tubular
CONNECTIONS



*TTS-6 and the Tejas logo are registered trademarks of Tejas Tubular Products, Inc.



TWO-STEP CONNECTION

TTS-6 Features



The Tejas Tubular TTS-6 is an industry known thread design connection for use in production tubing and work string applications. The dual step design on upset ends provides trouble-free stabbing and make-up with superior galling resistance. The 100% tensile, 100% internal pressure and 100% collapse efficiency, along with high torque strength, provides a trouble-free connection for any HT/HP application.

Applications

- HP/HT gas well
- Production well
- Workover

Available

- 2 3/8" OD and 2 7/8" OD

Features

- Integral connection
- Upset ends
- Dual step design
- 90° torque shoulder
- Internal & external metal-to-metal seal
- Flush ID

Test-proven sealability under combined loads

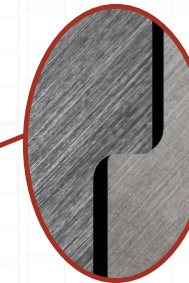
Torque-to-Yield

Torque-to-yield testing was performed to verify the torsional limits of the TTS-6 connection.



30° SEAL & TORQUE STOP

- External pressure with secondary internal pressure seal
- Torque stop



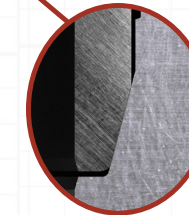
90° TORQUE SHOULDER

- Provides high torque strength
- Repeatability for multiple make-and-breaks



THREAD FORM DESIGN

- Non-interference thread form for excellent galling resistance
- The two-step thread design eliminates cross-threading make-and-breaks



14° PRIMARY METAL SEAL

- 100% internal pressure rating of pipe body